



# GeoForAll

Monthly Newsletter



## Table of Contents

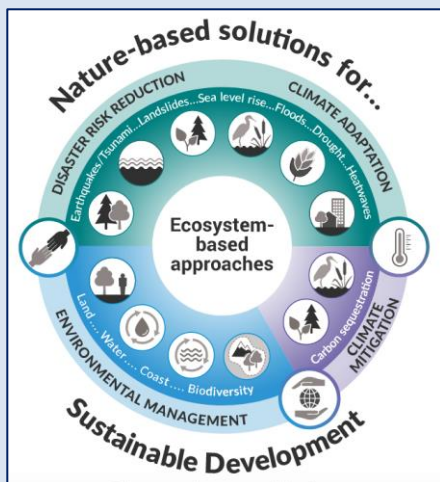
Editorial .....  
 Editorial Board ..... 2  
 1. Activities .....  
 2. A) Lab of the month.....  
 B) GeoAmbassador .....  
 3. Events ..... 1  
 4. Conferences ..... 1  
 5. Webinars ..... 5  
 6. Courses ..... 5  
 7. Training programs .....5  
 8. Key research publication..... 5  
 9. Funding opportunities .....  
 10. New free and open software, open data .....  
 11. Free Books ..... 5  
 12. Articles ..... 5  
 13. Scholarships for students and staff .....  
 14. Exchange programs for students and staff .....  
 15. Awards .....  
 16. Web sites .....  
 17. Ideas ..... 8  
 18. Social contribution .....

## Be part of "Geo for All"

### 3. Events

- MOOC on Nature-based Solutions for Disaster and Climate Resilience developed by the Partnership for Environment and Disaster Risk Reduction (PEDRR) and the United Nations Environment Programme (UNEP), with support from the European Commission. It is hosted by the SDG Academy.

This free and self-paced course is available at <https://pedrr.org/MOOC>



### 4. Conferences

#### NORTH AMERICA

#### October 2022

1. 2-6 October: [GIS-Pro 2022](#) URISA's 60th Anniversary Conference  
Venue: Boise, ID, USA
2. 14-16 October: [National Council for Geographic Education](#) (NCGE)  
Venue: Minneapolis, MN, USA

#### EUROPE

#### October 2022

3. 26-28 October: [XII International Congress of Geomatics and Earth Sciences, TOPCART, 2022](#)  
Venue: Seville, Spain

#### ASIA

#### October 2022

4. 3-7 October: [The Asian Conference on Remote Sensing – 2022](#) (ACRS-2022)  
Venue: Ulaanbaatar, Mongolia (online)
5. 1-5 October: Applied Geoinformatics for Digital Transformation and Environmental Stewardship  
Venue: University of Kerala, Thiruvananthapuram, India



## Editorial Board

Please refer to the appropriate person according to the following table:

<p>Chief Editor</p> 	<p>Nikos Lambrinos, Professor, Dept. of Primary Education, Aristotle University of Thessaloniki, Greece. President of the Hellenic digital earth Centre of Excellence <a href="mailto:labrinos@eled.auth.gr">labrinos@eled.auth.gr</a></p>	Oceania
<p>Co-editor</p> 	<p>Rizwan Bulbul, Assistant Professor of GIScience Head of Geospatial Research and Education Lab Department of Space Science, Institute of Space Technology, Islamabad, Pakistan <a href="mailto:bulbul@grel.ist.edu.pk">bulbul@grel.ist.edu.pk</a></p>	India, Sri Lanka, Pakistan, Afghanistan, Nepal, Burma, Iran, Iraq, Jordan, Syria, Israel, Lebanon, Turkey, Saudi Arabia, Oman, Yemen, United Arab Emirates, Kuwait and Islands of S. Pacific.
<p>Co-editors</p> 	<p>Pavel Kikin, Senior Lecturer "Department of applied informatics and IT", Siberian State Univer. of Geosystems and Technologies Alexey Kolesnikov, Senior Lecturer "Department of cartography and GIS", Siberian State Univer. of Geosystems and Technologies <a href="mailto:it-technologies@yandex.ru">it-technologies@yandex.ru</a></p>	Russia, Mongolia, China, Japan, S. Korea, Vietnam, Thailand, Malaysia, Laos, Myanmar, Cambodia, Singapore, Brunei, Indonesia, Philippines, Turkmenistan, Uzbekistan, Tajikistan and Kyrgyzstan.
<p>Co-editor</p> 	<p>Rania Elsayed, Computers &amp; Information Researcher, Division of Scientific Training &amp; Continuous Studies, National Authority for Remote Sensing &amp; Space Sciences, Cairo, Egypt. <a href="mailto:ranyaalsayed@gmail.com">ranyaalsayed@gmail.com</a></p>	Africa
<p>Co-editor</p> 	<p>Seraphim Alvanides, Reader (Geographical Information Science) Northumbria University, Newcastle NE1 8ST, United Kingdom. <a href="mailto:s.alvanides@gmail.com">s.alvanides@gmail.com</a></p>	Scandinavian countries, Denmark, Germany, Austria, Switzerland, UK, Ireland, Iceland
<p>Co-editor</p> 	<p>Antoni Perez Navaro, Associate Professor at Universitat Oberta de Catalunya (UOC) Computer Sciences and Multimedia Department <a href="mailto:aperezn@uoc.edu">aperezn@uoc.edu</a></p>	Italy, Malta, Spain, Portugal, France, Belgium, The Netherlands, Luxemburg.
<p>Co-editor</p> 	<p>Emma Strong Planner with Pueblo County, Colorado <a href="mailto:eestrong118@gmail.com">eestrong118@gmail.com</a></p>	North and Central America
<p>Co-editor</p> 	<p>Sergio Acosta Y Lara, Departamento de Geomática Dirección, Nacional de Topografía, Ministerio de Transporte y Obras Públicas, URUGUAY <a href="mailto:sergio.acostaylara@mtop.gub.uy">sergio.acostaylara@mtop.gub.uy</a></p>	South America
<p>Co-editor</p> 	<p>Codrina Ilie, PhD student at the Technical University of Civil Engineering, Bucharest, Romania</p>	The Balkans, Ukraine, Moldavia, Estonia, Lithuania, Belarus, Latvia, Hungary, Czech Republic, Slovakia
<p>Production Designer</p> 	<p>Nikos Voudrislis, MSc, PhD in geography education. <a href="mailto:nvoudris@gmail.com">nvoudris@gmail.com</a></p>	Design and final formation of the newsletter
	<p>Paulo César Coronado Sánchez, Professor of computer sciences at Universidad Distrital Francisco José de Caldas, Head of GISEPROI and OSGeoLabUD research Group. Bogotá, Colombia <a href="mailto:paulocoronado@gmail.com">paulocoronado@gmail.com</a></p>	Translator and designer of the Spanish Edition



## GeoForAll Themes

### ▪ OpenCity Smart

Theme under revision

### ▪ Teacher Training & School Education

➤ Chairs: Elżbieta Wołoszyńska-Wiśniewska (Poland), Nikos Lambrinos (Greece)

➤ Mail list: [geoforall-teachertraining@lists.osgeo.org](mailto:geoforall-teachertraining@lists.osgeo.org)

➤ Website: [http://wiki.osgeo.org/wiki/GeoForAll\\_TeacherTraining\\_SchoolEducation](http://wiki.osgeo.org/wiki/GeoForAll_TeacherTraining_SchoolEducation)

### ▪ CitizenScience

➤ Chairs: Peter Mooney (Ireland) and Maria Brovelli (Italy)

➤ Mail list: <https://lists.osgeo.org/cgi-bin/mailman/listinfo/geoforall-geocrowd>

➤ Website: [http://wiki.osgeo.org/wiki/Geocrowdsourcing\\_CitizenScience\\_FOSS4G](http://wiki.osgeo.org/wiki/Geocrowdsourcing_CitizenScience_FOSS4G)

### ▪ AgriGIS

➤ Chairs: Didier Leibovici (U.K.) and Nobusuke Iwasaki (Japan)

➤ Mail list: <https://lists.osgeo.org/cgi-bin/mailman/listinfo/geoforall-agrigis>

➤ Website: <http://wiki.osgeo.org/wiki/AgriGIS>

## GeoForAll Regional Chairs and Contact Information

### North America Region

Chairs: Helena Mitasova (USA), Charles Schweik (USA), Phillip Davis (USA) Subscribe at mail list <http://lists.osgeo.org/cgi-bin/mailman/listinfo/geoforall-northamerica>

Email: [na.gfa.chair@osgeo.org](mailto:na.gfa.chair@osgeo.org)

### Iberoamerican Region

Chairs: Sergio Acosta y Lara (Uruguay) and Silvana Camboim (Brazil) and Antoni Pérez Navarro (Spain). Subscribe at mail list:

<https://lists.osgeo.org/mailman/listinfo/geoforall-iberoamerica>

Email: [geoforall-iberoamerica@lists.osgeo.org](mailto:geoforall-iberoamerica@lists.osgeo.org)

### Africa Region

Chairs: Msilikale Msilanga (Tanzania), Serena Coetzee (South Africa) and Bridget Fleming (South Africa) Subscribe at mail list

<http://lists.osgeo.org/cgi-bin/mailman/listinfo/geoforall-africa>

Email: [africa.gfa.chair@osgeo.org](mailto:africa.gfa.chair@osgeo.org)

### Asia Region (including Australia)

Chairs: Tuong Thuy Vu (Malaysia/Vietnam) and Venkatesh Raghavan (Japan/India) Subscribe at maillist <http://lists.osgeo.org/cgi-bin/mailman/listinfo/geoforall-asiaaustralia>

Email: [asia.gfa.chair@osgeo.org](mailto:asia.gfa.chair@osgeo.org)

### Europe Region

Chairs: Maria Brovelli (Italy) and Peter Mooney (Ireland) Subscribe at mail list

<http://lists.osgeo.org/cgi-bin/mailman/listinfo/geoforall-europe>

Email: [eu.gfa.chair@osgeo.org](mailto:eu.gfa.chair@osgeo.org)



## GeoAmbassador Content table

July 2016, Vol.2, no.7	Prof. Georg Gartner, Vienna University of Technology
Aug 2016, Vol.2, no.8	Prof. Silvana Philippi Camboim, Federal University of Paraná, Brazil
Sep 2016, Vol.2, no.9	Nimalika Fernando, Sri Lanka
Oct 2016, Vol.2, no.10	Sergio Acosta Y Lara, Montevideo Uruguay
Nov 2016, Vol. 2, no. 11	Victoria Rautenbach, Centre of Geoinformation Science Univ. of Pretoria, South Africa
Dec 2016, Vol.2, no.12	Dr. Daria Svidzinska, Taras Shevchenko National University of Kyiv, Ukraine
Jan 2017, Vol.3 no.1	Dr. Mark Ware, University of South Wakes, UK
Feb 2017, Vol.3, no. 2	Dr. Rafael Moreno Sanchez, Department of Geography and Environmental Sciences, University of Colorado Denver, USA
March 2017, Vol.3 no.3	Dr. Tuong Thuy Vu, School of Environmental and Geographical Sciences, University of Nottingham, Malaysia campus
April 2017, Vol.3 no.4	Michael P. Finn, U.S. Geological Survey
May 2017, Vol.3 no.5	Dr. Peter Mooney, Maynooth University, NASA
June 2017, Vol.3 no.6	Patrick Hogan, NASA
July 2017, Vol.3 no.7	Prof. Dr. Josef Strobl, Salzburg
September 2017, Vol.3 no.9	Bridget Fleming, South Africa
October 2017, Vol.3 no.10	Sven Schade, Joint Research Centre, Italy
November 2017, Vol.3 no.11	Luciene Stamato Delazari, Universidade Federal do Paraná in Brazil
December 2017, Vol.3 no.12	Charlie Schweik, Univ. of Massachussets, USA
January 2018, Vol.4 no.1	Julia Wagemann, European Centre for Medium-Range Weather Forecasts
February 2018, Vol.4 no.2	Barend Köbben, Department of Geo-Information Processing University of Twente
March 2018, Vol.4 no.3	Kurt Menke, Birds Eye View
April 2018, Vol.4 no.4	Dr. Clous Rinner, Department of Geography and Environmental Studies at Ryerson University, Toronto, Canada
June 2018, Vol.4, no.6	Martin Landa, Department of Geomatics, Faculty of Civil Engineering, Czech Technical University (CTU) in Prague

## Lab of the Month, Content table

Aug 2015, Vol.1 no.1	Open Source Geospatial Lab, Kathmandu University, Nepal (Asia)
Sep 2015, Vol.1 no.2	FOSS4G Lab, University of Colorado Denver (USA)
Oct 2015, Vol.1, no.3	Open Source Geospatial Lab, University of Southampton, UK (Europe)
Nov 2015, Vol.1 no.4	The Northeast Institute of Geography and Agroecology of Chinese Academy of Science, China (Asia)
Jan 2016, Vol.2 no.1	Centre for Geoinformation Science, University of Pretoria, South Africa, (Africa)
Feb 2016, Vol.2 no.2	Open Source Geospatial Lab, University of Newcastle, UK, (Europe)
Mar 2016, Vol.2 no.3	SMART Open Source Geospatial Lab, University of Wollongong, (Australia)
Apr 2016, Vol.2 no.4	Regional Centre for Mapping of Resources for Development, Nairobi, Kenya (Africa)
May 2016, Vol.2 no.5	GeoDa Centre – Arizona State University, (USA)
June 2016, Vol.2 no.6	Direccion Nacional de Topografia – MTOP Montevideo, Uruguay, (South America)
July 2016, Vol.2 no.7	SIGTE – University of Girona, Spain (Europe)
August 2016, Vol.2 no.8	Open Source Geospatial Lab, Department of Geodesy and Surveying, Budapest Univ. of Technology and Economics, Hungary (Europe).
September 2016, Vol.2 no.9	Open Source Geospatial Lab, Faculty of Geodesy, University of Zagreb, Croatia, (Europe)
October 2016, Vol.2 no.10	Hellenic digital earth Centre of Excellence, Aristotle University of Thessaloniki, Greece, (Europe)
November 2016, Vol.2 no.11	Department of Geoinformatics, Palacký University in Olomouc, Czech Republic
December 2016, Vol.2 no.12	Asian Institute of Technology, Bangkok, Thailand
January 2017, Vol.3 no.1	Spatial Lab, Texas A&M, Corpus Christi, USA
February 2017, Vol.3 no.2	Open Source Geospatial Lab, Faculty of Civil Engineering, Belgrade, Serbia
March 2017, Vol.3 no.3	Geomatics and Earth Observation Laboratory (GEOlab) , Politecnico di Milano, Italy
April 2017, Vol.3 no.4	Faculty of Civil Engineering, Department of Geomatics, Czech Technical University in Prague, Czech Republic
May 2017, Vol.3 no.5	the Laboratory of socio-geographical research of the University of Siena, ITALY
June 2017, Vol.3 no.6	A World Bridge program
July 2017, Vol.3 no.7	Department of Civil, Environmental and Mechanical Engineering of the University of Trento, Italy
August 2017, Vol.3 no.8	Institute of Geography, Faculty of Science, Pavol Jozef Šafárik University in Košice, Slovakia
November 2020, Vol.6 no.11	Universitat Oberta de Catalunya (UOC), Spain
January 2021, Vol.7 no.01	gvSIG Uruguay Community, Uruguay





## 5. Webinars

---

- If you want to start learning how to use QGIS, there are some excellent free resources at <https://www.gislounge.com/free-ways-to-learn-qgis/> and [https://www.gislounge.com/self-guided-qgis-courses/?utm\\_medium=email&utm\\_campaign=GISNL-Aug-27-2020&utm\\_source=YMLP](https://www.gislounge.com/self-guided-qgis-courses/?utm_medium=email&utm_campaign=GISNL-Aug-27-2020&utm_source=YMLP)

## 6. Courses

---

- EUMeTrain Marine Course 2022  
Start date: October 24  
End date: December 9  
Region: Europe  
Host: EUMeTrain  
Organizer: EUMeTrain, EUMETSAT  
Format: Online  
Language: English  
Contact name: Nuno Moreira, Carla Barroso  
Contact email: [nuno.moreira@ipma.pt](mailto:nuno.moreira@ipma.pt), [carla.barroso@eumetsat.int](mailto:carla.barroso@eumetsat.int)

## 7. Training programs

---

- GeoForAll educational materials have been transferred to our new web site. [GeoForAll educational inventory system, a place to search and share educational materials](#)



## 8. Key Research Publications

---

- “Global Community Guidelines for Documenting, Sharing, and Reusing Quality Information of Individual Digital Datasets” available at <https://datascience.codata.org/articles/10.5334/dsj-2022-008/>

## 11. Free books, educational materials, etc.

---

- Visit the YouTube QGIS channel at <https://www.youtube.com/channel/UCGS162t4hkOA0b35ucf1yng/videos> to get videos of QGIS applications, representations and ideas.
- You can download “The International Archives of the Photogrammetry, Remote Sensing and Spatial Information Sciences” at <https://www.int-arch-photogramm-remote-sens-spatial-inf-sci.net/XLVIII-4-W1-2022/>



## 12. Articles

---

### Acronyms

by **Nikos Lambrinos**, Chief Editor, and **Michael Finn**.

For those who would like to support this effort, please send any acronyms to the Chief Editor ([labrinos@eled.auth.gr](mailto:labrinos@eled.auth.gr)).

3DEP: 3-D Elevation Program

AAG: Association of American Geographers



AGI: Ambient Geographic Information	CUDA: Compute Unified Device Architecture
AGS: American Geographical Society	DAAC: Distributed Active Archive Center (of NASA)
AGU: American Geophysical Union	DEM: Digital Elevation Model
AI: Artificial Intelligence	DSM: Digital Surface Models
AM/FM: Automated Mapping/Facilities Management	DWG: Design file format
API: Application Programming Interface	DXF: Drawing Interchange File
ASPRS: American Society for Photogrammetry and Remote Sensing	ECMWF: European Center for Medium range Weather Forecasting
AURIN: Australian Urban Research Infrastructure Network	EOS: Earth Observation Science
BBSRC: Biotechnology and Biological Sciences Research Council	EOSDIS: Earth Observing System and Data Information System
BDS: BeiDou Navigation Satellite Demonstration System	EPA: Environmental Protection Agency
BIM: Building Information Modelling	EPSG: European Petrol Survey Group (used in projection IDs)
CAADP: Comprehensive African Agricultural Development Programme	ESA: European Space Agency
CAD: Computer Aided Design	ESERO: European Space Education Resource Office
CaGIS: Cartography and Geographic Information Society	EUROGI: European Umbrella Organisation for Geographic Information
CCGI: Collaboratively Contributed Geographic Information	EuroSDR: European Spatial Data Research
CEGIS: Center of Excellence for Geospatial Information Science	FOSS: Free and Open Source Software
CEOS: Committee on Earth Observation Satellites	FOSS4G: Free and Open Source Software For Geospatial
CI: CyberInfrastructure	GCP: Ground Control Point
CLGE: The Council of European Geodetic Surveyors	GDAL: Geospatial Data Abstraction Library
CODATA: Committee on Data for Science and Technology	GEO: Group on Earth Observations
COGO: Coordinate geometry	GEO: Geosynchronous Earth Orbits
CRC: Census Research Centre	GloFAS: Global Flood Awareness System
CRS: Coordinate Reference System	GNSS: Global Navigational Satellite System
CSA: Canadian Space Agency	GODAN: Global Open Data for Agriculture and Nutrition
CSSTEAP: Center for Space Science & Technology Education in Asia and the Pacific	GPS: Global Positioning System
	GPX: GPS Exchange Format
	GRACE: Gravity Recovery and Climate Experiment (satellite program)
	GRASPgfs: Geospatial Resource for Agricultural



Species and Pests and Pathogens with workflow integrated modeling to support Global Food Security

GSoC: Google Summer of Code

HLPF: High Level Political Forum (of UN)

HOT: Humanitarian OpenStreetMap Team

HPC: high-performance computing

ICA: International Cartographic Association

ICSU-WDS: International Council for Science – World Data System

IDE: Spatial Data Infrastructure

INSPIRE: Infrastructure for Spatial Information in Europe

IPGH: Pan American Institute of Geography and History

ISO: International Organization for Standardization

ISPRS: International Society for Photogrammetry and Remote Sensing

ISRO: Indian Space Research Organization

JAXA: Japan Aerospace Exploration Agency

KML: Keyhole Markup Language

LBS: Location-Based Service

LEO: Low Earth Orbits

LiDAR: Light Detection and Ranging

LOC: Local Organizing Committee

LOD: Level Of Detail

MEO: Medium Earth Orbits

MIL: Media and Information Literacy

MoU: Memorandum of Understanding

MSS: Multispectral Scanner

NAD: North American Datum

NCSA: National Center for Supercomputing Applications

NED: National Elevation Dataset

NEPAD: NEw Partnership for African Development

NGA: National Geospatial Intelligence Agency

NHD: National Hydrologic Dataset

NLCD: National Land Cover Dataset

NOOSA: United Nations Office for Outer Space Affairs

NRSA: Indian National Remote Sensing Agency

NSDI: National Spatial Data Infrastructure

NSF: National Science Foundation

OECD: Organisation for Economic Co-Operation and Development

OER: Open Educational Resources

OGC: Open Geospatial Consortium

OHI: International Hydrographic Office

OSGeo: Open Source Geospatial Foundation

OSM: OpenStreetMap

OTB: Orfeo Tool Box

PPGIS: Public Participation in Geographic Information Systems

PPSR: Public Participation in Scientific Research

RBV: Return Beam Vidicon

RCMRD: Regional Centre for Mapping of Resources for Development

RDA: Research Data Alliance

ROSCOSMOS: Russian Federal Space Agency

ROSHYDROMET: Russian Federal Service for Hydrometeorology and Environmental Monitoring

RUFORUM: Regional Universities Forum for capacity building in agriculture

SaaS: Software as a Service

SAR: Synthetic Aperture Radar

SDG: Sustainable Development Goal

SDI: Spatial Data Infrastructure

SIG: Geographic Information System

SIGTE: The GIS and Remote Sensing Service of the University of Girona, Spain

SPIDER: open SPatial data Infrastructure eDucation nEtwoRk



SQL: Structured Query Language

STISA 2024: Science Technology Innovation Strategy for Africa

STSM: Short Term Scientific Missions

SWIR: Short Wave Infrared

TIN: Triangulated Irregular Network

UAV: Unmanned Aerial Vehicle

UML: Unified Modeling Language

UN-GGIM: United Nations Global Geospatial Information Management

USGS: U.S. Geological Survey

USGIF: United States Geospatial Intelligence Foundation

VGI: Volunteered Geographic Information

VNIR: Visible Near Infrared

XSEDE: Extreme Science and Engineering Discovery Environment

WCS: Web Coverage Service

WFS: Web Feature Service

WGCapD: Working Group on Capacity Building and Data Democracy

WGS: World Geodetic System

WISERD: Wales Institute of Social & Economic Research, Data & Methods

WMO: World Meteorological Organization

WMS: Web Map Service

WMTS: Web Map Tiles Services

WOIS: Water Observation Information System

WPS: Web Processing Service

## 17. Ideas / Information

1. If you are interested in educational material, then go to <https://www.osgeo.org/initiatives/geo-for-all/in-your-classroom/> where you can find software resources for your classroom. Also, go to “Resources” <https://www.osgeo.org/resources/> to get a guidance on how to use open source projects and tools.

2. Call for article submission

[The International Journal for Participatory Mapping](#) (IJPM) Editorial Board ([journal@pmappingsociety.org](mailto:journal@pmappingsociety.org)) has identified special themes for the first four issues which will cover the first two years of the publication. Papers can be submitted for peer review anytime before the deadlines outlined in the theme calls. You need to indicate your intent to submit a paper by email to the guest editor of a special issue with the title of the paper, authors, and abstract. The full manuscript, as a word document, will be uploaded to [IJPM Dashboard](#).

Issue 1 - Unravelling the history, theory, scope, and politics of participatory mapping (submit by June 1st, 2022)

Issue 2 - Methods and Practice of Participatory Mapping (submit by December 1st, 2022)

Issue 3-Indigenous and Rural Community Mapping (submit by April 2023)

Issue 4 - The Impact of Participatory Mapping on Urban Planning and Development (submit by August 2023)

If you're unsure if your topic fits within the scope of the journal, please email [journal@pmappingsociety.org](mailto:journal@pmappingsociety.org).





3. If you are interested in GeoEthics, you are welcome to join the OGC GeoEthics maillist at <https://lists.opengeospatial.org/mailman/listinfo/geoethics>

There are many interesting discussions in the list that might be of interest

<http://lists.ogc.org/pipermail/geoethics/2022-August/thread.html>

Is it Ethical for any Vendors to Trademark “Science” in any scientific discipline to market/sales/promote any vendor brand/products/services as “the Science”?

<http://lists.ogc.org/pipermail/geoethics/2022-August/000040.html>

You may take a look at the Locus Charter (<https://ethicalgeo.org/locus-charter/>) and think about your organization joining as a supporter. There are currently 16 organizations worldwide, with a long list of organizations that are currently running it through their particular processes.

You can connect through the web site, or contact Nicole Oveisi ([noveisi@americangeo.org](mailto:noveisi@americangeo.org)) directly for more information!

Please feel free to read more about an initiative Dr. Suchith Anand and his colleague Kathryn Bailey are in the process of setting up to provide a neutral platform for discussions and priority setting in the field of data ethics and governance. Details at <https://ethicaldatainitiative.org>

For any information needed write to [Suchith.Anand@ethicaldatainitiative.org](mailto:Suchith.Anand@ethicaldatainitiative.org) or [kathryn.bailey@ethicaldatainitiative.org](mailto:kathryn.bailey@ethicaldatainitiative.org)

4. The Space4Innovation edited book project in collaboration with the GEOIndigenousAlliance, the Confederation of Indigenous Nationalities of the Ecuadorian Amazon (CONFENIAE), and the Namunyak Community Conservation tentatively titled: “Indigenizing Education for Climate Action: Strategies, Case Studies, and Testimonies.” calls for chapter submission no later than Sunday, October 16 by 11:59 pm GMT. Authors will be notified on or before October 20, 2022.

Submission Form at <https://lnkd.in/ebYCFbM>

